

# Yn y Lwp!

(In the loop - Ysgol Cwm Brombil's Weekly Bulletin)

## In this edition:

- Sporting Success
- YCB Gardens continues to grow
- YCB Community Update

### Autumn Term / Tymor y Gaeaf

Half Term : Monday 28<sup>th</sup> October - Friday 1<sup>st</sup> November /  
*Hanner Tymor:* Dydd Llun Hydref 28 – Dydd Gwener Tachwedd 1  
 End / Diwedd: Friday 20<sup>th</sup> December 2024 / Dydd Gwener Rhagfyr 2024

## Upcoming activities:

| Week Beginning - |                                       | Monday 30 <sup>th</sup> September 2024 |
|------------------|---------------------------------------|--|
| Monday           | Yr 10<br>English<br>Literature<br>NEA |  |
| Tuesday          |                                       |  |
| Wednesday        |                                       | Year 11 English Language NEA Unit 1    |
| Thursday         |                                       | Year 11 English Language NEA Unit 1    |
| Friday           |                                       | Year 11 English Language NEA Unit 1    |

| Week Beginning - |                               | Monday 7 <sup>th</sup> October 2024 |
|------------------|-------------------------------|-------------------------------------|
| Monday           | Year 10<br>English Lit<br>NEA |                                     |
| Tuesday          |                               | Year 11 Food NEA Practical          |
| Wednesday        |                               | Year 6 open evening                 |
| Thursday         |                               | Year 11 Food NEA Practical          |
| Friday           |                               |                                     |

Our exciting program of Enrichment is out and available on our website:  
[Ysgol Cwm Brombil Enrichment Programme](#)

## Attendance Information

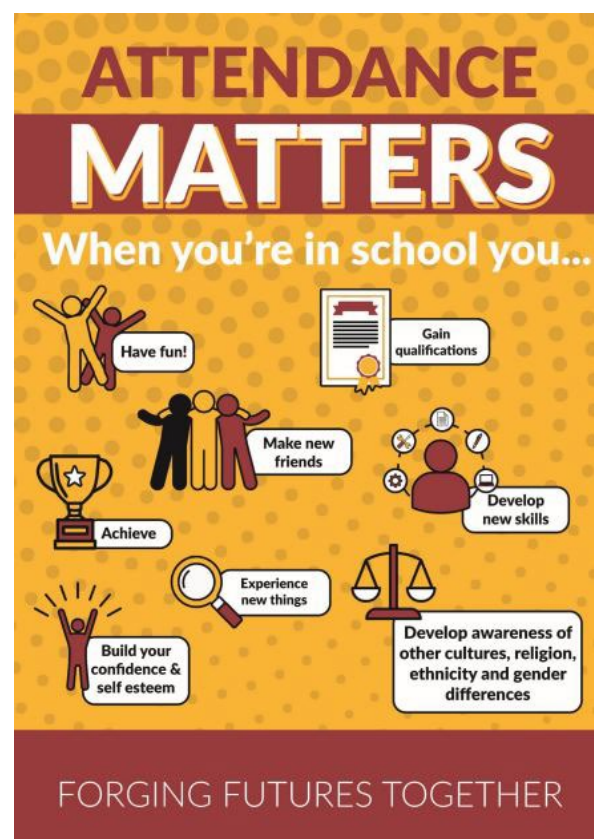


Our attendance target for all students is 100% and our **minimum expectation is 95%**. The infographic above shows the impact of days missed and minutes late can have on a child's learning.

For example:

- If a child is **late to school just 5 minutes** each day, throughout the year that equates to **3 days lost to learning (15 hours)**.
- Attendances of **97%** allows for one day of absence per half term and results in **30 hours lost to learning**
- **Important Reminders:**

1. Parents **MUST** contact school to report any absences on **01639 760110 before 8.30 am**.
2. Parents should contact the school **each day** that a pupil is not attending.
3. If the school are not notified, then **you will be contacted** by a member of the Attendance team to find out why your child is not in school.
4. If you child is not notified of the reason for the absence it will be recorded as **unauthorised absence**.
5. If there are three unauthorised absences in a row, the Safeguarding Lead and Education Welfare Officer will be made aware in order to ensure that you child is safe.
6. You will be required to produce medical evidence if you state that your child is ill for 3 or more consecutive days.
7. We will ask the school Healthcare Professional to contact you if there is an absence of more than 2 weeks.
8. Term time leave will only be granted by the headteacher on request.
9. Where possible, **all appointments should be made outside of the school day**.



# Sporting Success

## Girls Football

Congratulation to the year 9&10 girls for progressing into the next round of the Welsh Cup after a solid game against Ysgol Bryn Tawe.



The Year 7 & 8 girls have played their first football game this week with an excellent performance in the Welsh Cup against Maes y Dderwen. A strong performance resulted in victory, onwards to the next round!





# NEXT WEEK SPORTING FIXTURES



Tuesday

Yr 7 and Yr 9 Rugby Home Llangatwg  
Y9 and Yr 10 Netball Home

Wednesday

Yr 8 and 10 Rugby Away Llangatwg

Thursday

Year 7 Rugby Away Bryntirion  
Year 11 Football Home

## YCB Garden

Our Junior Apprentice Logan has been busy this week preparing the beds for winter and collecting weeds around our school!



## School Uniform Expectations

All students are expected to wear school uniform throughout the school day. Below are uniform guidelines for both boys and girls, as well as PE Kit:

### All pupils Year 7 to 11

|                                    |   |  |
|------------------------------------|---|--|
| Blazer                             | Black school blazer                                 | Available from Bergoni. Blazers must be brought to school and worn every day.        |
| Shirt                              | White shirt with collar.                            | Can be purchased from any retailer.  |
| Trousers                           | Plain black tailored uniform style trousers.        | Jean style, corduroys, skinny or casual trousers are not permitted.                  |
| Skirt *                            | Plain black school uniform style skirt.             | Skirts should be an appropriate length.  |
| Tights                             | Plain black tights                                  | Can be purchased from any retailer.  |
| Shoes                              | Black shoes with black laces.                       | Available from any retailer. Black leather converse shoes are permitted. NO TRAINERS |
| Tie                                | School tie.   | Available from Bergoni.  |
| Jumper                             | Black with badge and claret trim around the collar. | Available from Bergoni. Jumpers are optional.  |
| Shorts                             | Black tailored shorts.                              | Optional for the summer term.  |
| Outdoor coat/Jacket                | Coats should be waterproof and black in colour.     | Available from any retailer.   |
| Socks (only if not wearing tights) | Ankle height, plain black or white.                 | Available from any retailer.   |

For further information regarding our uniform expectations please see our school website:

<https://ysgolcwmbrombil.npted.org/uniform.html>

# Community



## The Pantry

Our weekly food bank is open every Thursday from 3.15. This is available to anyone within our school community, no referral needed, please just drop in as and when needed.

We all need a little help sometimes. Entrance to the Food Bank – The Pantry is accessed via the pupil entrance in the senior phase school, inside the canteen area.

Refreshments will be provided for everyone waiting, we look forward to seeing you, please remember to bring your bags with you.

## DONATIONS

We are always grateful for any donations that you can provide towards our food bank, we always need the below items

Drop off trolley in reception

Tinned meats – hotdogs, minced beef, pies, meatballs, currys etc

Beans

Beans and Sausage

Spaghetti

Tinned Veg – Potatoes, carrots, peas, sweetcorn

Tuna

Tinned fruits

Cereal

UHT Milk

Pasta – including sauces

Toiletries – shampoo, shower gel, conditioner, toothpaste – NO sanitary products, we have lots in stock

Toilet rolls



THANK YOU FOR YOUR SUPPORT

## MACMILLAN COFFEE MORNING

Come and join us Friday 27<sup>th</sup> September in our primary phase hall for a Macmillan coffee morning, everyone is welcome, please bring cash. We will be open 9.00 - 11.00 am

We would also appreciate cake donations; please could you drop them into reception

If you have any questions, please do not hesitate to contact us

Thank you for your support



## **CHRISTMAS @ YSGOL CWM BROMBIL**

We will be holding our first Christmas Fayre at Ysgol Cwm Brombil on Thursday 28<sup>th</sup> November 3.30 -7pm. It would be fantastic to see as many of you including your family and friends attending in support of our Christmas Child Appeal 2024. We have lots of exciting things for children and adults.

We have lots of amazing stalls from people within the community along with Santa, Storytelling with Mrs Claus, Elf letter writing, Wreath making in our Christmas themed garden. We have music from local bands along with our school choir, to get everyone in the festive mood.

Entry to the Fayre is free, with some bookable activities.

If you would like a stall on the night please complete the link below

<https://forms.office.com/e/8PAy4FAPuD>



## **CHRISTMAS CHILD APPEAL 2024**

We have launched our Christmas Child Appeal 2024; this is our 7th Year supporting those most in need at Christmas time. Ensuring Santa visits all children.

Supporting children and families within the community. We are expecting to support between 250 - 300 children, with clothes, gifts, etc

If you would like to support our Christmas Child appeal please could you drop off any gifts to our reception area.

If you would like to make a financial donation please follow the link or scan the QR Code

[https://paypal.me/ycbcommunity?country.x=GB&locale.x=en\\_GB](https://paypal.me/ycbcommunity?country.x=GB&locale.x=en_GB)



If you would like us to provide you with support at Christmas, please click the link below

<https://forms.office.com/e/M7h8Uz9R4k>

If you have any questions please contact us [Community@ysgolcwmbrombil.co.uk](mailto:Community@ysgolcwmbrombil.co.uk) or visits us on Facebook- YCB Community



# Vaping/ e-cigarettes

## Information regarding e-cigarettes / vaping

We want to bring to your attention the worrying trend amongst a few peoples in school. We are taking this issue very seriously due to the negative health effects vaping can have and the negative affect it can have on a pupil's learning. This letter aims to:

- Inform you of the issue;
- Give you access to information and resources;
- Alert you to the consequences if your child vaping on school property

### What is vaping?

Vaping is the act of inhaling a vapour produced by an e cigarette or electronic vaporiser (vape). The vapour that is inhaled usually contain nicotine, which is highly addictive, and many other chemicals which are potentially harmful. Some vapes even contain cannabis oil! The liquids that are inhaled are often flavoured and can even smell fruity. Some vapes are marketed with sweet like names and come in attractive colours.

### Health concerns

The aerosol from e-cigarettes can be damaging to a person's health, particularly the developing bodies of adolescents. It can contain harmful chemicals, including nicotine; ultrafine particles that can be inhaled deep into the lungs; flavourings such as diacetyl, a chemical linked to lung disease; volatile organic compounds such as Benzene which is also found in car exhaust fumes and heavy metals such as nickel, tin and lead which can build up to toxic levels in the body over time.

There has been a significant increase in underage vaping over the last couple of years.

Vaping is illegal to under 18's. Research shows that the adolescent brain is far more susceptible to addictive substances and this ultimately leads to an unnecessary and potentially harmful distraction from the child's learning.

Our first and foremost concern is pupil health and safety. Pupils who are using these devices are inhaling nicotine and other harmful chemicals thinking it is safe. Pupils purchasing and using these vapes, particularly those from the internet, risk inhaling higher levels of nicotine than cigarettes. Nicotine is addictive and can harm brain development in adolescents. There is also the risk of other illegal substances and even more dangerous substances in some of these vapes.

### How the school has responded,

There has been a significant amount of publicity about the concerns with underage vaping. At Ysgol Cwm Brombil we have installed vape alarms as a deterrent in toilets around the school. These allow us to identify pupils that are vaping and impose consequences as well as provide support for what is, essentially, an addiction to nicotine.

### Consequences for a child found vaping on school site and / or bringing a vape onto the school site.

Smoking (including the smoking of e-cigarettes / vapes) is against the law for young people under the age of 18, and, as our policy states, smoking is prohibited throughout the school premises. This includes school buses.

Pupils caught vaping will receive an afterschool detention in the first instance, an internal exclusion if they are caught a second time and a third time will result in an external exclusion from school.

The e-cigarette / vape will be confiscated and the child's parent / carer informed. The parent / carer may collect the e-cigarette / vape in the following week. Under no circumstance will they be returned to the child themselves. If the e-cigarette / vape is not collected within a week it will be safely disposed of.

# HARMFUL EFFECTS OF VAPING



## BRAIN

- Nicotine addiction
- Headaches
- Dizziness
- Seizures
- Tremors
- Anxiety
- Restlessness
- Confusion
- Attention problem
- Learning and mood disorders

## EYES

- Irritation
- Blurry Vision

## MOUTH

- Irritation
- Can cause gum disease

## THROAT

- Sore throat

## LUNGS

- Rapid, shallow breathing
- Coughing
- Wheezing
- Permanent lung damage from diacetyl, a flavoring chemical, which scars tiny air sacs making airways thick and narrow

## HEART

- Increased risk of heart attack and stroke
- Chest pain

## STOMACH & INTESTINES

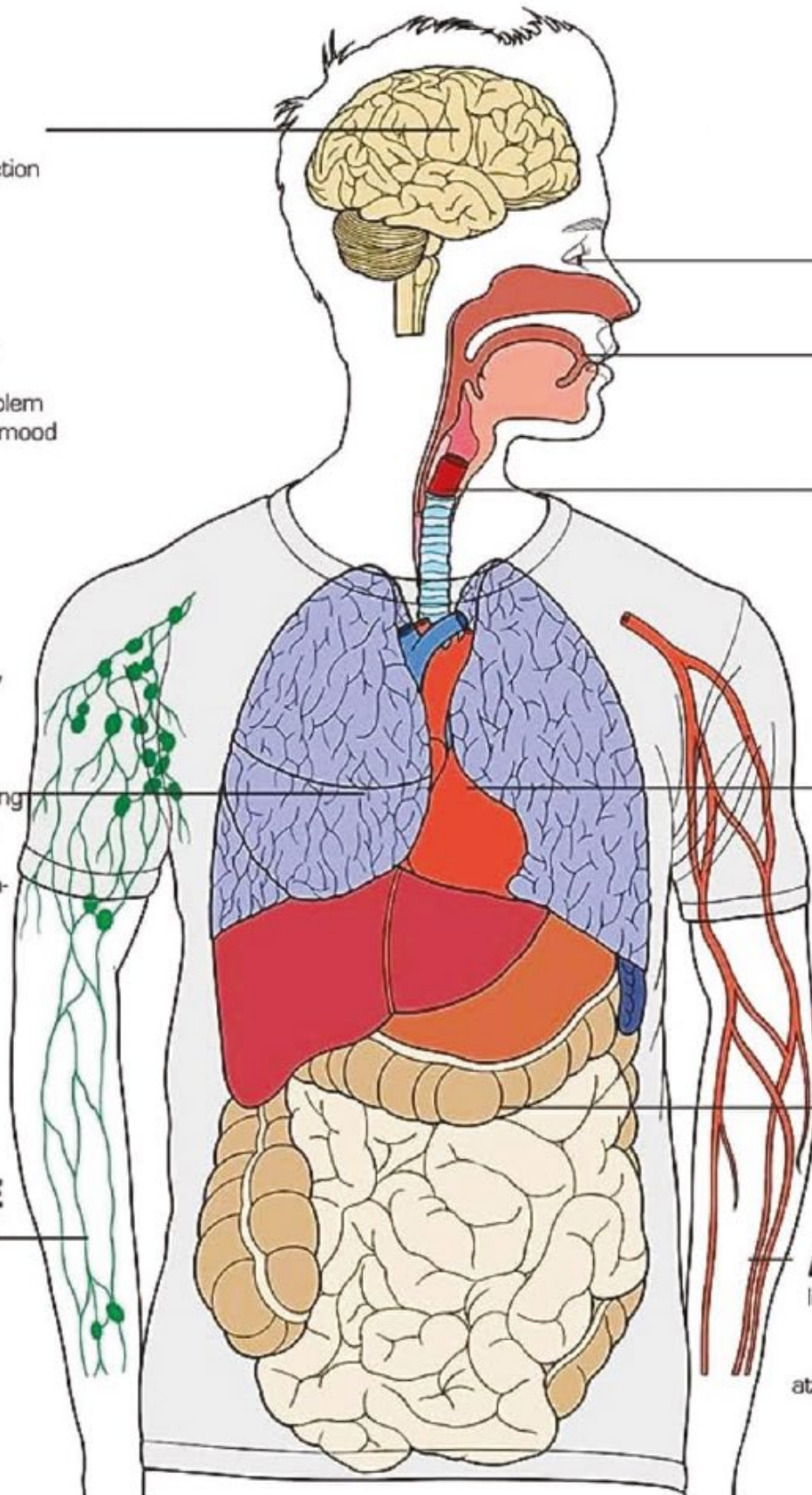
- Vomiting
- Nausea
- Abdominal pain

## IMMUNE SYSTEM

- Can harm your immune system increasing your risk of illnesses

## ARTERIES

- Increases blood pressure and risk of heart attack and stroke



## Term dates for 2023-24

| Autumn Term, half term 1 2024-25  |  |
|---|--|
| Tuesday 3 <sup>rd</sup> September 2024  | Year 7 & 11 attend school                    |
| Wednesday 4 <sup>th</sup> September 2024  | All pupils attend school                     |
| Friday 25 <sup>th</sup> October 2024  | Last Day of half term 1                      |
| Half Term holiday - Monday 28 <sup>th</sup> October 2024 – Friday 1 <sup>st</sup> November 2024   |  |
| Autumn Term, half term 2 2024-25  |  |
| Monday 6 <sup>th</sup> November 2024  | Term starts                                  |
| Friday 29 <sup>th</sup> November 2024   | Staff INSET (Training) Day                   |
| Monday 2 <sup>nd</sup> December 2024  | Staff INSET (Training) Day                   |
| Friday 20 <sup>th</sup> December 2024   | Last Day of half term 2                      |
| Christmas Holiday – Monday 23 <sup>rd</sup> December 2024 – Friday 3 <sup>rd</sup> January 2025   |  |
| Spring Term, half term 3 2024-25  |  |
| Monday 6 <sup>th</sup> January 2025   | Half term 3 Starts for all pupils            |
| Friday 21 <sup>st</sup> February 2025   | Last Day of half term 3                      |
| Half Term holiday - Monday 24 <sup>th</sup> February 2025 – Friday 28 <sup>th</sup> February 2025 |  |
| Spring Term, half term 4 2024-25  |  |
| Monday 3 <sup>rd</sup> March 2025   | Term 4 Starts                                |
| Friday 21 <sup>st</sup> March 2025  | Staff INSET (Training) Day                   |
| Friday 11 <sup>th</sup> April 2025  | Last Day of half term 4 for pupils           |
| Easter holiday - Monday 14 <sup>th</sup> April 2025 - Friday 25 <sup>th</sup> April 2025          |  |
| Summer Term, half term 5 2024-25  |  |
| Monday 28 <sup>th</sup> April 2025  | Term 5 Starts                                |
| Monday 5 <sup>th</sup> May 2025   | May Day Bank Holiday                         |
| Thursday 22 <sup>nd</sup> May 2025  | Last Day of half term 5                      |
| Friday 23 <sup>rd</sup> May 2025  | Staff INSET (Training) Day                   |
| Half Term - Monday 26 <sup>th</sup> May 2025 - Friday 31 <sup>st</sup> May 2025                   |  |
| Summer Term Half term 6 2024-25   |  |
| Monday 2 <sup>nd</sup> June 2025  | Half term 6 Starts                           |
| Friday 18 <sup>th</sup> July 2025   | Last Day of half term 6 & End of school Year |

