

# Yn y Lwp!

(In the loop - Ysgol Cwm Brombil's Weekly Bulletin)

## In this edition:

- Sporting Success and a visit to the LLandarcy Academy of Sport.
- Siarter Iaith News about the Welsh Language Charter
- YCB Community

### Autumn Term / Tymor y Gaeaf

Half Term : Monday 28<sup>th</sup> October - Friday 1<sup>st</sup> November /  
*Hanner Tymor:* Dydd Llun Hydref 28 – Dydd Gwener Tachwedd 1  
 End / Diwedd: Friday 20<sup>th</sup> December 2024 / Dydd Gwener Rhagfyr 2024

Week Beginning – Monday 21 <sup>st</sup> October 2024		Week 1
Monday		
Tuesday		
Wednesday		
Thursday		
Friday		Last day of October Half Term

Week Beginning - Monday 28 <sup>th</sup> October 2024	
Monday	Half Term break Pupils return on Monday November 4 <sup>th</sup> (week 1)
Tuesday	
Wednesday	
Thursday	
Friday	

Our exciting program of Enrichment is out and available on our website:

[Ysgol Cwm Brombil Enrichment Programme](#)

## Attendance Information



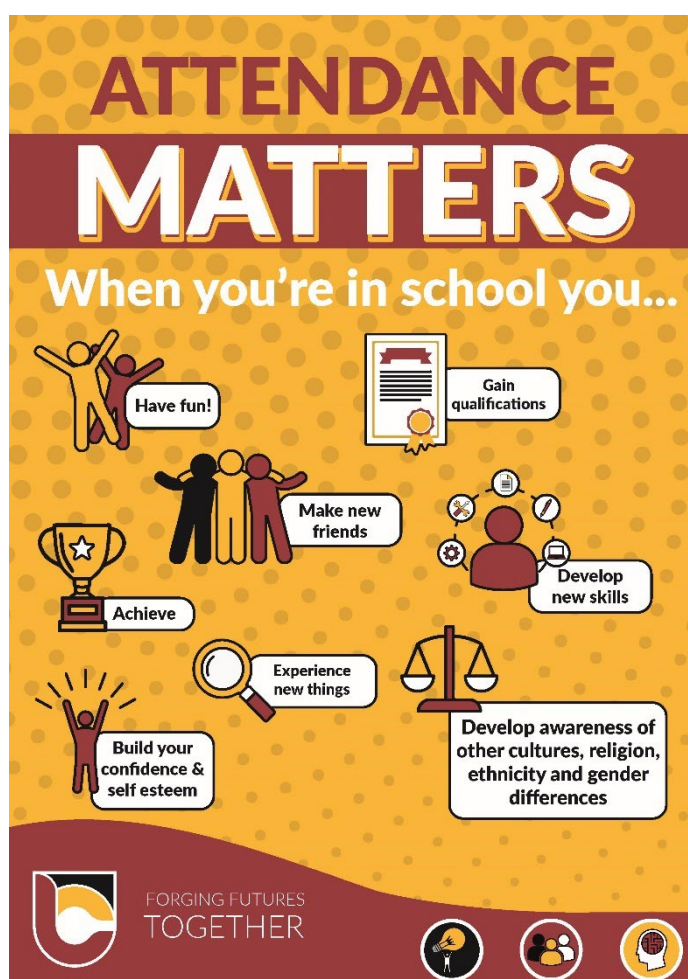
Our attendance target for all students is 100% and our **minimum expectation is 95%**. The infographic above shows the impact of days missed and minutes late can have on a child's learning.

For example:

- If a child is **late to school just 5 minutes** each day, throughout the year that equates to **3 days lost to learning (15 hours)**.
- Attendances of **97%** allows for one day of absence per half term and results in **30 hours lost to learning**

### Important Reminders:

1. Parents **MUST** contact school to report any absences on **01639 760110 before 8.30 am**.
2. Parents should contact the school **each day** that a pupil is not attending.
3. If the school are not notified, then **you will be contacted** by a member of the Attendance team to find out why your child is not in school.
4. If your child is not notified of the reason for the absence it will be recorded as **unauthorised absence**.
5. If there are three unauthorised absences in a row, the Safeguarding Lead and Education Welfare Officer will be made aware to ensure that your child is safe.
6. You will be required to produce medical evidence if you state that your child is ill for 3 or more consecutive days.
7. We will ask the school Healthcare Professional to contact you if there is an absence of more than 2 weeks.
8. Term time leave will only be granted by the headteacher on request.
9. Where possible, **all appointments should be made outside of the school day**.





# Y Siarter Iaith

The Welsh Language Charter

# CYMRAEG

The Welsh Government's aim is to have one million Welsh speakers by 2050.

This year, we are working towards the **Gwobr Siarter Iaith Efydd** (The Welsh Language Charter Bronze Award). This involves working with the wider school community to support the learners understanding of Welsh history, culture and identity.

In Ysgol Cwm Brombil we are aiming for a consistent use of Welsh across our curriculum and in all aspects of school life and we are proud of our culture, language and traditions.

Parents play a vital part in Siarter Iaith Gymraeg and can help Ysgol Cwm Brombil achieve an award. There are many Welsh resources to help you learn Welsh and strengthen your child's understanding of Welsh history and culture.

## Ways you can help

Encourage your child to use everyday Welsh in school  
e.g. Bore da, Prynhawn da, Shwmae etc

Attend Welsh for adults' courses [Find a course](#) | [Learn Welsh](#)

Encourage your child to have a positive attitude towards the Welsh language

Talk about Welsh history and culture with your child

Use Welsh language learning apps with your child e.g. Duolingo, Quizlet, Say something in Welsh

### Brawddeg yr Wythnos/ Phrase of the Week-

**Calan Gaeaf** - Halloween

Pronunciation- "Cal- ann gai-af"



# UNWELL? CHOOSE WELL



Scan to get further advice on the NHS 111 Wales website



## Self Care

Minor Ailments  
(treated at home)

Minor Cuts & Grazes  
Minor Bruises  
Minor Sprains  
Coughs & Colds



## Pharmacy

Local Expert Advice

Minor Illnesses  
Headaches  
Stomach Upsets  
Bites & Stings



## NHS 111

Non-Emergency Help

Use NHS 111 online if you're unsure what service you need



## GP Practice

Team of Medical Professionals

Lasting Symptoms  
Chronic Pain  
Long Term Conditions  
New Prescriptions



## Urgent Care

Urgent Treatment Centres

Breaks & Sprains  
X-Rays  
Cuts & Burns  
Fever & Rashes



## A&E or 999

Emergencies ONLY!

Choking  
Chest Pain  
Blacking Out  
Serious Blood Loss



If you can, use online services in the first instance



## Mental Health

### FOR URGENT MENTAL HEALTH HELP

Text 'SHOUT' to 85258 for free from a UK mobile network or scan the QR Code to find a local helpline.



# Sporting News & Success

## Year 7 Rugby:

Another two fixtures this week for our year seven rugby team who are going from strength to strength as they develop their skills and learn how to play better as a team.



## Girls Basketball

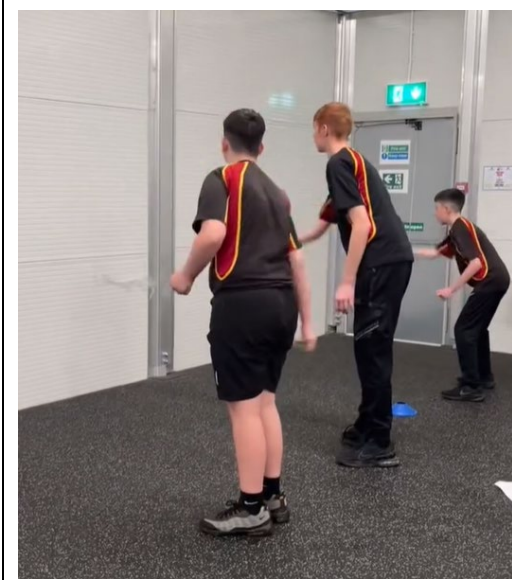


@basketballwales are starting a Girls only Hub once a month starting on Saturday Oct 19th. All Hub's will take place at Cefn Hengoed LC 12:30-15:30 Pupils can book on using the QR code above. Go and get involved girls!!



## Year 10 P.E. - Visit to Llandarcy Campus

This week our GCSE PE and Sports students attended a morning of fitness testing at the Llandarcy Academy of Sport. This was an excellent opportunity with some of our students reaching PBs on the day! It was nice to have current NPT College students especially some of our past pupils leading the sessions. It was also wonderful to hear extremely positive feedback about our students from academy staff! We are very grateful to them for the opportunity - Thankyou.



## Next Week's Sporting Fixtures:

### **Tuesday October 22<sup>nd</sup>**

- Cross country relay, Cwmtawe (during the day)
- Yr 10 Boys Rugby vs St Josephs (away)

### **Wednesday October 23<sup>rd</sup>**

- Under 15s girls football Welsh cup vs Ystalyfera (away)
- Yr 11 boys football Welsh cup vs St Julians 2pm kick off
- Yr 10 boys football vs Ysgol Bae Baglan (away)

### **Thursday October 24<sup>th</sup>**

- Yr 7 boys rugby vs Maes-y-Dderwen
- Yr 8 boys football vs Ysgol Bae Baglan



## PSG Football camp



Are you free this October half-term and interested in playing football?  
Our October Football Camp in Ysgol Cwm Brombil could be for you!  
After a really successful summer camp, we have decided to return this month to offer a Half Term Camp at the school with the following dates available:



30th October- 1 st November (9.30am-3.30pm)

Individual day bookings @ £25.00  
Optional PSG Academy Wales kit @ £45.00  
(Select as many or as few days as you are available)  
\*\*Prices are inclusive of VAT\*\*

Come and train the Parisian way this October!  
Training sessions designed, developed and delivered by  
Paris Saint-Germain



Paris Saint-Germain Academy Wales!  
Paris Saint-Germain Academy UK & ERA Sports & Education Ltd

email: [info@psgacademyuk.com](mailto:info@psgacademyuk.com)

Tel: 0161 235 5222

web: [www.psgacademyuk.com](http://www.psgacademyuk.com)

Booking Link:

<https://www.psgacademyuk.com/holiday-camp-booking-form>



## School Uniform Expectations

All students are expected to wear school uniform throughout the school day.

Below are uniform guidelines for both boys and girls, as well as PE Kit:

All pupils Year 7 to 11		
Blazer	Black school blazer	Available from Bergoni. Blazers must be brought to school and worn every day.
Shirt	White shirt with collar.	Can be purchased from any retailer.
Trousers	Plain black tailored uniform style trousers.	Jean style, corduroys, skinny or casual trousers are not permitted.
Skirt *	Plain black school uniform style skirt.	Skirts should be an appropriate length.
Tights	Plain black tights	Tights are to be worn with skirts and can be purchased from any retailer.
Shoes	Black shoes with black laces.	Available from any retailer. Black leather converse shoes are permitted. <b>NO TRAINERS</b>
Tie	School tie.	Available from Bergoni.
Jumper	Black with badge.	Available from Bergoni. Jumpers are optional.
Shorts	Black tailored shorts.	Only for the summer term. Not PE shorts.
Outdoor coat/Jacket	Coats should be waterproof and black in colour.	Available from any retailer.
Socks (only if not wearing tights)	Ankle height, plain black or white.	Available from any retailer.
<p><b>Please note hoodies are <u>not</u> allowed in school. Any pupil who refuses to remove them during the day will have them confiscated.</b></p>		
Physical Education		
Unisex T Shirt		Available exclusively from Bergoni
Rugby Jersey		Available exclusively from Bergoni
Shorts		Available exclusively from Bergoni
Socks		Available exclusively from Bergoni
Unisex ¼ zipped top		Optional item. Available exclusively from Bergoni
Plain black tracksuit bottoms		Optional available at any retail store
Skort or Legging (recommended to go a size bigger than your normal clothes size as they are smaller sizes.)		Available exclusively from Bergoni
<p><b>Please note, even on PE days, hoodies are not allowed in school. Pupils are expected to wear a long sleeve PE top when cold.</b></p>		

For further information regarding our uniform expectations please see our [school website](#):

# YCB Community

## The Pantry

Our weekly food bank is open every Thursday from 3.15. This is available to anyone within our school community, no referral needed, please just drop in as and when needed.

We all need a little help sometimes. Entrance to the Food Bank – The Pantry is accessed via the pupil entrance in the senior phase school, inside the canteen area.

Refreshments will be provided for everyone waiting, we look forward to seeing you, please remember to bring your bags with you.



## Donations

We are always grateful for any donations that you can provide towards our food bank, we always need the below items. There is a drop off trolley in reception:

- Tinned Goods:
  - Meats – hotdogs, minced beef, pies, meatballs, curries etc.
  - Beans
  - Beans and Sausage
  - Spaghetti
  - Tinned Veg
    - Potatoes,
    - carrots,
    - peas,
    - sweetcorn
  - Tuna
  - Tinned fruits
- Cereal
- UHT Milk
- Pasta – including sauces
- Toiletries
  - Shampoo,
  - Shower gel,
  - Conditioner,
  - Toothpaste
  - Toilet rolls



\*Please NO sanitary products, we have lots in stock

THANK YOU FOR YOUR SUPPORT

## **CHRISTMAS @ YSGOL CWM BROMBIL**

We will be holding our first Christmas Fayre at Ysgol Cwm Brombil on Thursday 28<sup>th</sup> November 3.30 -7pm. It would be fantastic to see as many of you including your family and friends attending in support of our Christmas Child Appeal 2024. We have lots of exciting things for children and adults.

We have lots of amazing stalls from people within the community along with Santa, Storytelling with Mrs Claus, Elf letter writing, Wreath making in our Christmas themed garden. We have music from local bands along with our school choir, to get everyone in the festive mood.

Entry to the Fayre is free, with some bookable activities.

If you would like a stall on the night please complete the link below

<https://forms.office.com/e/8PAy4FAPuD>



## **CHRISTMAS CHILD APPEAL 2024**



We have launched our Christmas Child Appeal 2024; this is our 7th Year supporting those most in need at Christmas time. Ensuring Santa visits all children.

Supporting children and families within the community. We are expecting to support between 250 - 300 children, with clothes, gifts, etc

If you would like to support our Christmas Child appeal please could you drop off any gifts to our reception area.

If you would like to make a financial donation please follow the link or scan the QR Code

[https://paypal.me/ycbcommunity?country.x=GB&locale.x=en\\_GB](https://paypal.me/ycbcommunity?country.x=GB&locale.x=en_GB)

If you would like us to provide you with support at Christmas, please click the link below

<https://forms.office.com/e/M7h8Uz9R4k>



If you have any questions please contact us [Community@ysgolcwmbrombil.co.uk](mailto:Community@ysgolcwmbrombil.co.uk) or visits us on Facebook- YCB Community

## Term dates for 2024-25

<b>Autumn Term, half term 1 2024-25</b>	
Tuesday 3 <sup>rd</sup> September 2024	Year 7 & 11 attend school
Wednesday 4 <sup>th</sup> September 2024	All pupils attend school
Friday 25 <sup>th</sup> October 2024	Last Day of half term 1
Half Term holiday - Monday 28 <sup>th</sup> October 2024 – Friday 1 <sup>st</sup> November 2024	
<b>Autumn Term, half term 2 2024-25</b>	
Monday 6 <sup>th</sup> November 2024	Term starts
Friday 29 <sup>th</sup> November 2024	Staff INSET (Training) Day
Monday 2 <sup>nd</sup> December 2024	Staff INSET (Training) Day
Friday 20 <sup>th</sup> December 2024	Last Day of half term 2
Christmas Holiday – Monday 23 <sup>rd</sup> December 2024 – Friday 3 <sup>rd</sup> January 2025	
<b>Spring Term, half term 3 2024-25</b>	
Monday 6 <sup>th</sup> January 2025	Half term 3 Starts for all pupils
Friday 21 <sup>st</sup> February 2025	Last Day of half term 3
Half Term holiday - Monday 24 <sup>th</sup> February 2025 – Friday 28 <sup>th</sup> February 2025	
<b>Spring Term, half term 4 2024-25</b>	
Monday 3 <sup>rd</sup> March 2025	Term 4 Starts
Friday 21 <sup>st</sup> March 2025	Staff INSET (Training) Day
Friday 11 <sup>th</sup> April 2025	Last Day of half term 4 for pupils
Easter holiday - Monday 14 <sup>th</sup> April 2025 - Friday 25 <sup>th</sup> April 2025	
<b>Summer Term, half term 5 2024-25</b>	
Monday 28 <sup>th</sup> April 2025	Term 5 Starts
Monday 5 <sup>th</sup> May 2025	May Day Bank Holiday
Thursday 22 <sup>nd</sup> May 2025	Last Day of half term 5
Friday 23 <sup>rd</sup> May 2025	Staff INSET (Training) Day
Half Term - Monday 26 <sup>th</sup> May 2025 - Friday 31 <sup>st</sup> May 2025	
<b>Summer Term Half term 6 2024-25</b>	
Monday 2 <sup>nd</sup> June 2025	Half term 6 Starts
Friday 18 <sup>th</sup> July 2025	Last Day of half term 6 & End of school Year

